

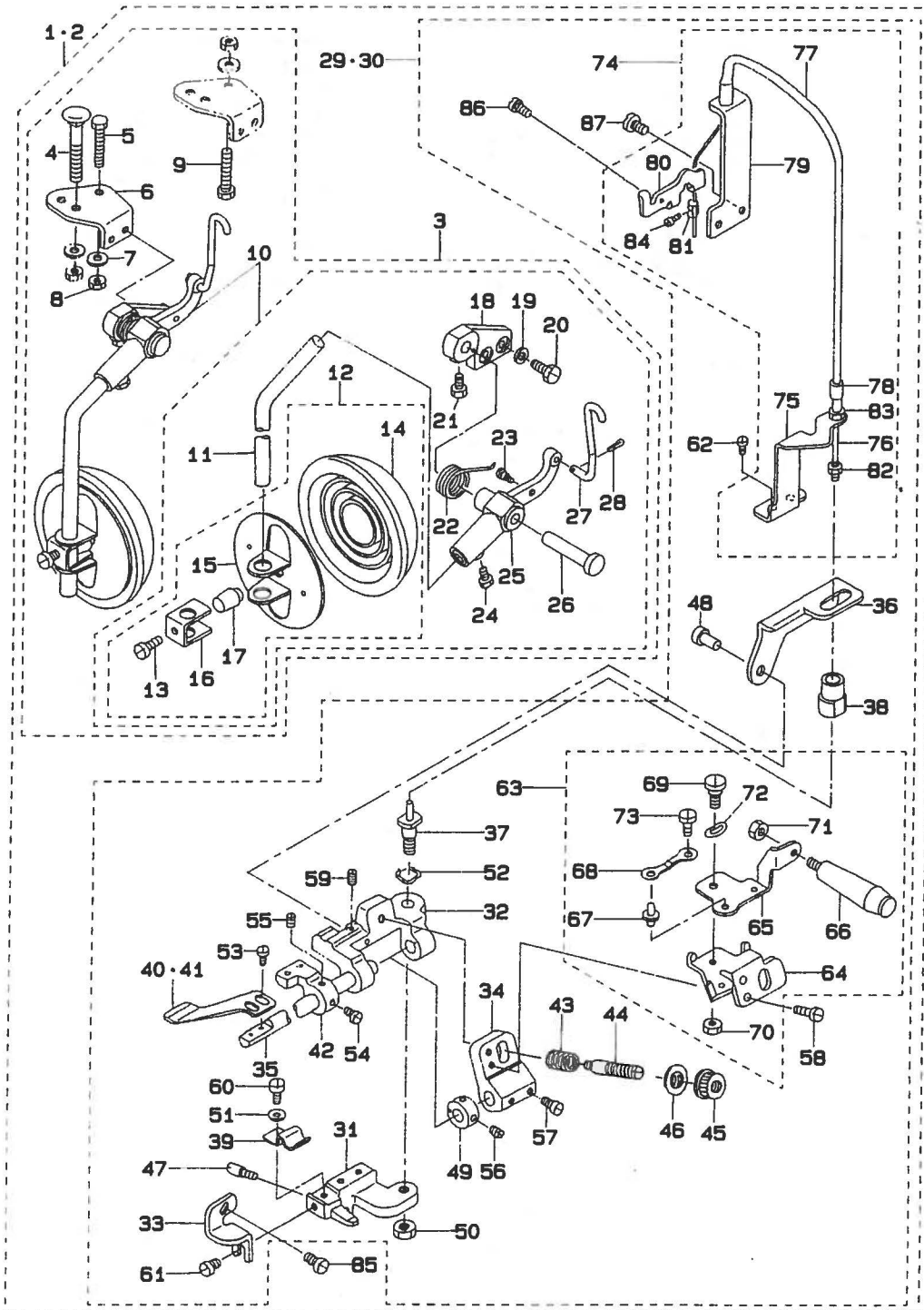
Swing Type Gathering Device FOR JUKI

スイングタイプひだとり装置

S159・S160・S161・S162

PARTS LIST

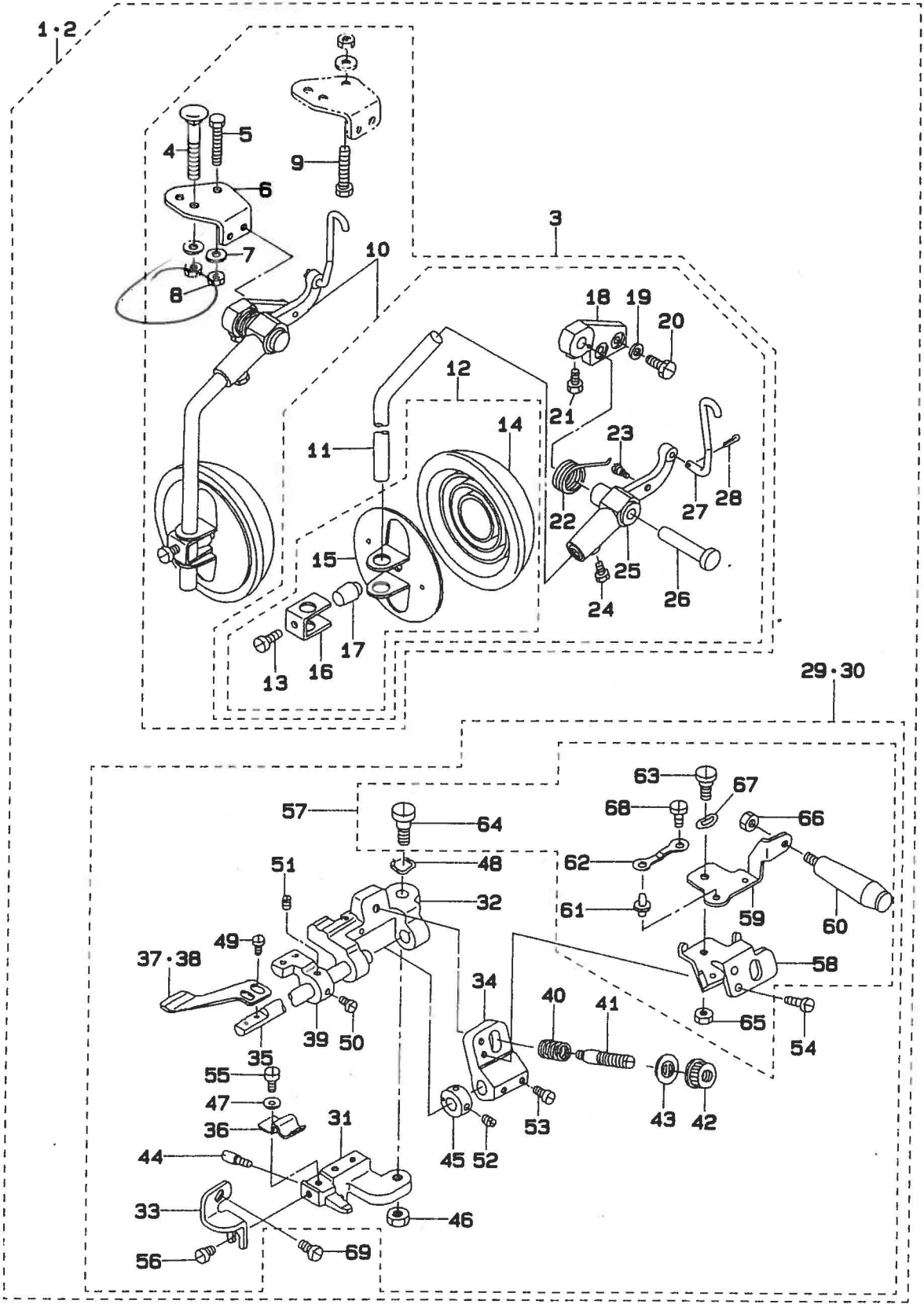
1. S159 : SAFETY STITCH MACHINE WITH PEDAL
 インターロック用ペダル連動式
 S160 : OVERLOCK STITCH MACHINE WITH PEDAL
 オーバーロック用ペダル連動式



REF. NO	NOTE	PART NO.	DESCRIPTION	ヒンメイ	Qty
1	#01	MAS-159000A0	TUCKING DEVICE ASM.	ヒタトリソウチウクミ	1
2	#02	MAS-160000A0	TUCKING DEVICE ASM.	ヒタトリソウチウクミ	1
3		MAS-107010A0	KNEE OPERATING DEVICE ASM.	ヒラアキソウチクミ	(1)
4	#03	MAS-10704000	BOLT	ウチイホネ	(1)
5	#04	SH-9083013-SC	SCREW M8 L=30	ロウカクネ ねじ M8 L=30	(1)
6		MAS-10701000	INSTALLING PLATE	ヒラアキレハ-タイ トリツクイ	(1)
7	#04	WP-0850002-SC	WASHER 8.5X18X1.6	ヒラネジ 8.5X18X1.6	(1)
8	#01	NM-6080600-SM	NUT M8	ロウカクナツ M8 1ｼｼ	(1)
9	#05	SM-9084533-SC	SCREW M8 L=45	ロウカクネ ねじ M8 L=45	(2)
10		MAS-107010C0	KNEE PRESS PLATE ASM.	ヒラアキレハクミ	(1)
11		MAS-10702000	ROD	ヒラアキソウチ	(1)
12	110-23751		KNEE PRESS PLATE ASM.	ヒラアキレハクミ	(1)
13	SS-9151540-SR		SCREW 15/64-28 L=15	ロウカクネ ねじ 15/64-28 L=15	(1)
14	B3431-552-000-A		KNEE PRESS PLATE COVER	ヒラアキレハ カハ-	(1)
15	110-23702		KNEE PRESS PLATE	ヒラアキレハ	(1)
16	110-23801		KNEE PRESS PLATE HOLDER	ヒラアキレハヨキ	(1)
17	110-24403		RUBBER	ヒラアキゴム	(1)
18	MAS-10501000		LEVER INSTALLING BASE	ヒラアキレハ-タイ	(1)
19	WP-0740516-SP		WASHER 7.4X11.8X0.5	ヒラネジ 7.4X11.8X0.5	(2)
20	SS-0681610-TP		SCREW 9/32-28 L=16	ロウカクネ ねじ 9/32-28 L=16	(2)
21	SS-9151210-TP		SCREW 15/64-28 L=12	ロウカクネ ねじ 15/64-28 L=12	(1)
22	MAS-10502000		SPRING	ヒラアキレハ-ハネ	(1)
23	SD-0550501-SP		HINGE SCREW 5=5.5 H=5	ﾀﾞﾝｼﾞﾝ 5=5.5 H=5	(1)
24	SS-9151210-TP		SCREW 15/64-28 L=12	ロウカクネ ねじ 15/64-28 L=12	(1)
25	MAS-10502000		LEVER	ヒラアキレハ-	(1)
26	MAS-10504000		PIN	ヒラアキレハ-ｼﾞﾝ	(1)
27	MAS-10703000		CONNECTING ROD	ヒラアキソウチクミ	(1)
28	PD-0201000-OD		SPLIT PIN 1.8X10	ワリピン 1.8X10	(1)
29	#01	MAS-159010A0	PEDAL SHIRRING ATTACHMENT ASM.	ヒタトリソウチ(クミ)	(1)
30	#02	MAS-160010A0	PEDAL SHIRRING ATTACHMENT ASM.	ヒタトリソウチ(クミ)	(1)
31	MAS-15901000		PRESSER PLATE BASE	ヒタトリソウチトリツクイ	(1)
32	MAS-15902000		SWING BASE	ヒタトリソウチｼﾝｼﾞﾝ	(1)
33	MAS-15903000		BRACKET	マワリトメ	(1)
34	MAS-15904000		ARM	ヒタトリソウチハネキウチ	(1)
35	MAS-15905000		SHAFT	ヒタトリソウチ	(1)
36	MAS-15908000		LIFTING LEVER	ヒキアキレハ-	(1)
37	MAS-15909000		LIFTING SHAFT	ヒキアキソウチ	(1)
38	MAS-15910000		LIFTING COLLAR	ヒキアキカラ-	(1)
39	MAS-15911000		SPRING	ヒタトリソウチｼﾝｼﾞﾝ	(1)
40	#01	MAS-05108000	INTERMITTENT SHIRRING PRESSER	ヒタトリソウチ	(1)
41	#02	MAS-05208000	INTERMITTENT SHIRRING PLATE	ヒタトリソウチ	(1)
42	MAS-05212000		PIPING MOUNTING BLOCK	ハネｲﾝｼﾞﾝ トリツクイ	(1)
43	MAS-05205000		SPRING	ヒタトリソウチハネ	(1)
44	B3105-804-000		TENSION POST	イトチヨウｼﾝ	(1)
45	B3116-125-000		TENSION NUT	イトチヨウｼﾝ ナツ	(1)
46	B3120-125-000		ROTATING STOPPER	イトチヨウｼﾝ ｲﾀﾞﾝﾄﾞﾒ	(1)
47	MAS-05202000		SCREW	ヒタトリソウチ トリツクイ ｷﾞﾗｲﾝｼﾞﾝ	(1)
48	MAS-05714000		PIN	ヒキアキレハ- ﾋﾝｼﾞﾝ	(1)
49	CS-0790811-SP		THRUST COLLAR D=7.94 W=8	ｽﾄﾗｽﾄｸﾞ D=7.94 W=8	(1)
50	NS-6160520-SP		NUT 1/4-24	ロウカクナツ 1/4-24	(1)
51	WP-0480856-SP		WASHER 4.8X8.4X0.8	ヒラネジ 4.8X8.4X0.8	(1)
52	WZ-0850302-K0		WAVED WASHER 8.5X12.5X0.3	ﾅﾐｶﾞﾀﾅﾐｶﾞﾀ 8.5X12.5X0.3	(1)
53	SS-6090650-SP		SCREW 9/64-40 L=6	ヒラネジ 9/64-40 L=6	(2)
54	SS-6110850-TP		SCREW 11/64-40 L=5.5	ヒラネジ 11/64-40 L=5.5	(1)
55	SS-8110520-TP		SCREW 11/64-40 L=4.5	ﾄﾞﾚｯｼﾝｸﾞ 11/64-40 L=4.5	(1)
56	SS-8110520-TP		SCREW 11/64-40 L=4.5	ﾄﾞﾚｯｼﾝｸﾞ 11/64-40 L=4.5	(2)
57	SS-8110710-TP		SCREW 11/64-40 L=6.5	ヒラネジ 11/64-40 L=6.5	(2)
58	SS-4090715-SP		SCREW 9/64-40 L=7	ﾄﾞﾚｯｼﾝｸﾞ 9/64-40 L=7	(2)
59	SS-8090410-SP		SCREW 9/64-40 L=3.5	ﾄﾞﾚｯｼﾝｸﾞ 9/64-40 L=3.5	(1)
60	SS-7110710-SP		SCREW 11/64-40 L=7	ﾏﾙﾋﾗネジ 11/64-40 L=7	(1)
61	SS-7110720-SP		SCREW 11/64-40 L=7	ﾏﾙﾋﾗネジ 11/64-40 L=7	(1)
62	SS-7110910-SP		SCREW 11/64-40 L=8.5	ﾏﾙﾋﾗネジ 11/64-40 L=8.5	(2)
63	MAS-159060A0		LIFTING ARM ASM.	ヒキアキウチ(クミ)	(1)
64	MAS-15908000		LIFTING ARM	ヒキアキウチ	(1)
65	MAS-15907000		MANUAL LEVER ARM.	ｼﾞｽﾄ"ｸﾚハ-ウチ	(1)
66	MAS-15915000		MANUAL LEVER	ｼﾞｽﾄ"ｸﾚハ-	(1)
67	MAL-12115000		ARM FIXED PLATE STOPPER	ウチ"ｺﾞﾁｲﾀｽﾄｯﾊﾟｰ	(1)
68	MAL-12116000		ARM FIXED PLATE STOPPER SPRING	ウチ"ｺﾞﾁｲﾀｽﾄｯﾊﾟｰ ﾎ"ﾆ	(1)
69	SD-0600352-SP		HINGE SCREW	ﾀﾞﾝｼﾞﾝ	(1)
70	NS-6110350-SP		NUT 11/64-40	ロウカクナツ 11/64-40	(1)
71	NM-6050001-SP		NUT M5	ロウカクナツ M5X0.8 1ｼｼ	(1)
72	WZ-0640312-K0		WAVED WASHER	ﾅﾐｶﾞﾀﾅﾐｶﾞﾀ 6.4X11X0.3	(1)
73	SS-7110340-SP		SCREW 11/64-40 L= 3.2	ﾏﾙﾋﾗネジ 11/64-40 L= 3.2	(1)
74	MAS-159120A0		WIRE STOPPER ARM.	ワイヤ-ｽﾄｯﾊﾟｰ(クミ)	(1)
75	MAS-15912000		WIRE STOPPER	ワイヤ-ｽﾄｯﾊﾟｰ	(1)
76	MAS-159130A0		WIRE ASM.	ワイヤ(クミ)	(1)
77	MAS-15914000		WIRE TUBE	ワイヤ-ﾁｬｰﾌﾞ	(1)
78	MAS-12512000		WIRE ADJUSTING STUD	ワイヤ-ｷﾞﾗｲﾝｼﾞﾝ	(1)
79	MAS-057180A0		WIRE SUPPORT ASM.	ワイヤ-ｷﾞﾗｲﾝｼﾞﾝ	(1)
80	MAS-05719000		LIFTING LEVER CONNECTOR	ｷﾞﾗｲﾝｼﾞﾝ ﾋﾝｼﾞﾝ	(1)
81	MAS-05720000		WIRE STOPPER	ワイヤトメ	(1)
82	NS-6090310-SP		NUT 9/64-40	ロウカクナツ 9/64-40	(1)
83	NS-6110310-SP		NUT 11/64-40	ロウカクナツ 11/64-40	(1)
84	SS-0000640-SP		SCREW 9/64-40 L=6	ロウカクネ ねじ 9/64-40 L=6	(1)
85	SS-7110840-SP		SCREW 11/64-40 L=7.8	ﾏﾙﾋﾗネジ 11/64-40 L=7.8	(1)
86	SS-7110710-SP		SCREW 11/64-40 L=7	ﾏﾙﾋﾗネジ 11/64-40 L=7	(1)
87	SS-6151040-SP		SCREW 15/64-28 L=10	ヒラネジ 15/64-28 L=10	(2)

Note (注記) #01...FOR S150 S150 用
#02...FOR S160 S160 用
#03...FOR SEMI-SUNKEN TYPE TABLE 卓上式テーブル用 (輸出用)
(FOR EXPORT)
#04...FOR SEMI-SUNKEN TYPE TABLE 卓上式テーブル用
#05...FOR FULLY-SUNKEN TYPE TABLE 全沈式テーブル用

2. S161 : SAFETY STITCH MACHINE WITH MANUAL TYPE
 インターロック用手動レバー式
- S162 : OVERLOCK STITCH MACHINE WITH MANUAL TYPE
 オーバーロック用手動レバー式



REF. NO	NOTE	PART NO.	DESCRIPTION	ヒンメイ	QTY
1	#01	MAS-101000A0	TUCKING DEVICE ASM.	ヒタトリツカサツカサ	1
2	#02	MAS-102000A0	TUCKING DEVICE ASM.	ヒタトリツカサツカサ	1
3		MAS-107010A0	KNEE OPERATING DEVICE ASM.	ヒタアキツカサ	(1)
4	#03	MAS-10704000	BDLT	ウチイネ	(1)
5	#04	SH-0083013-SC	SCREW M8 L=30	ウツカサネ M8 L=30	(1)
6		MAS-10701000	INSTALLING PLATE	ヒタアキレハ-ガイ トリツカサ	(1)
7	#04	WP-0850002-SC	WASHER 8.5X18X1.0	ヒタアキネ 8.5X18X1.0	(1)
8	#04	NH-0080000-SH	NUT M8	ウツカサネ M8 1シ	(1)
9	#05	SH-0084533-SC	SCREW M8 L=45	ウツカサネ M8 L=45	(2)
10		MAS-107010C0	KNEE PRESS PLATE ASM.	ヒタアキツカサ	(1)
11		MAS-10702000	ROD	ヒタアキツカサ	(1)
12		110-23751	KNEE PRESS PLATE ASM.	ヒタアキツカサ	(1)
13		SS-9151540-SR	SCREW 15/64-28 L=15	ウツカサネ 15/64-28 L=15	(1)
14		B3431-552-000-A	KNEE PRESS PLATE COVER	ヒタアキツカサ	(1)
15		110-23702	KNEE PRESS PLATE	ヒタアキツカサ	(1)
16		110-23801	KNEE PRESS PLATE HOLDER	ヒタアキツカサ	(1)
17		110-24403	RUBBER	ヒタアキゴム	(1)
18		MAS-10501000	LEVER INSTALLING BASE	ヒタアキレハ-ガイ	(1)
19		WP-0740516-SP	WASHER 7.4X11.8X0.5	ヒタアキネ 7.4X11.8X0.5	(2)
20		SS-9081610-TP	SCREW 9/32-28 L=16	ウツカサネ 9/32-28 L=16	(2)
21		SS-9151210-TP	SCREW 15/64-28 L=11.8	ウツカサネ 15/64-28	(1)
22		MAS-10503000	SPRING	ヒタアキレハ-ガイ	(1)
23		SD-0550501-SP	HINGE SCREW D=5.5 H=5	タンネジ D=5.5 H=5	(1)
24		SS-9151210-TP	SCREW 15/64-28 L=11.8	ウツカサネ 15/64-28	(1)
25		MAS-10502000	LEVER	ヒタアキレハ-ガイ	(1)
26		MAS-10504000	PIN	ヒタアキレハ-ガイ	(1)
27		MAS-10703000	CONNECTING ROD	ヒタアキ レンカサネ	(1)
28		PD-0201000-0D	SPLIT PIN 1.8X10	ツリピン 1.8X10	(1)
29		MAS-101010A0	PEDAL SHIRTING ATTACHMENT ASM.	ヒタトリツカサ(ウチ)	(1)
30		MAS-102010A0	PEDAL SHIRTING ATTACHMENT ASM.	ヒタトリツカサ(ウチ)	(1)
31		MAS-15001000	PRESSER PLATE BASE	ヒタトリツカサトリツカサ	(1)
32		MAS-15002000	SWING BASE	ヒタトリツカサトリツカサ	(1)
33		MAS-15003000	BRACKET	マツリツカサ	(1)
34		MAS-15004000	ARM	ヒタトリツカサトリツカサ	(1)
35		MAS-15005000	SHAFT	ヒタトリツカサ	(1)
36		MAS-15011000	SPRING	ヒタトリツカサトリツカサ	(1)
37		MAS-05108000	INTERMITTENT SHIRTING PRESSER	ヒタトリツカサ	(1)
38		MAS-05208000	INTERMITTENT SHIRTING PLATE	ヒタトリツカサ	(1)
39		MAS-05212000	PIPING MOUNTING BLOCK	パイピング トリツカサ	(1)
40		MAS-05205000	SPRING	ヒタトリツカサトリツカサ	(1)
41		B3105-804-000	TENSION POST	トチヨシツカサ	(1)
42		B3116-125-000	TENSION NUT	トチヨシツカサ	(1)
43		B3120-125-000	ROTATING STOPPER	トチヨシツカサ	(1)
44		MAS-05202000	SCREW	ヒタトリツカサ トリツカサ	(1)
45		CS-0790811-SP	THRUST COLLAR D=7.94 V=8	スラストコラー D=7.94 V=8	(1)
46		NS-6160520-SP	NUT 1/4-24	ウツカサネ 1/4-24	(1)
47		WP-0480858-SP	WASHER 4.8X8.4X0.8	ヒタアキネ 4.8X8.4X0.8	(1)
48		WZ-0850302-K0	WAVED WASHER 8.5X12.5X0.3	ナミカサネ 8.5X12.5X0.3	(1)
49		SS-6090650-SP	SCREW 9/64-40 L=6	ヒタアキネ 9/64-40 L=6	(2)
50		SS-6110850-TP	SCREW 11/64-40 L=5.5	ヒタアキネ 11/64-40 L=5.5	(1)
51		SS-8110520-TP	SCREW 11/64-40 L= 4.5	トメネジ 11/64-40 L=4.5	(1)
52		SS-8110520-TP	SCREW 11/64-40 L= 4.5	トメネジ 11/64-40 L=4.5	(2)
53		SS-6110710-TP	SCREW 11/64-40 L= 6.5	ヒタアキネ 11/64-40 L=6.5	(2)
54		SS-4000715-SP	SCREW 9/64-40 L=7	トメネジ 9/64-40 L=7	(2)
55		SS-7110710-SP	SCREW 11/64-40 L=7	トメネジ 11/64-40 L=7	(1)
56		SS-7110720-SP	SCREW 11/64-40 L=7	トメネジ 11/64-40 L=7	(1)
57		MAS-150060A0	LIFTING ARM ASM.	ヒタアキツカサ	(1)
58		MAS-15006000	LIFTING ARM	ヒタアキツカサ	(1)
59		MAS-15007000	MANUAL LEVER ARM.	シフトウレハ-ガイ	(1)
60		MAS-15015000	MANUAL LEVER	シフトウレハ-ガイ	(1)
61		MAL-12115000	ARM FIXED PLATE STOPPER	ウチツカサ	(1)
62		MAL-12116000	ARM FIXED PLATE STOPPER SPRING	ウチツカサ	(1)
63		SD-0600352-SP	HINGE SCREW	タンネジ	(1)
64		SD-0790801-SP	HINGE SCREW D=7.94 H=8	タンネジ D=7.94 H=8	(1)
65		NS-6110350-SP	NUT 11/64-40	ウツカサネ 11/64-40	(1)
66		NH-6050001-SP	NUT M5	ウツカサネ M5X0.8 1シ	(1)
67		WZ-0640312-K0	WAVED WASHER	ナミカサネ 6.4X11X0.3	(1)
68		SS-7110340-SP	SCREW 11/64-40 L= 3.2	トメネジ 11/64-40 L= 3.2	(1)
69		SS-7110840-SP	SCREW 11/64-40 L=7.8	トメネジ 11/64-40 L=7.8	(1)

Note (注記) #01...FOR S161 S161 用
#02...FOR S162 S162 用
#03...FOR SEMI-SUNKEN TYPE TABLE 卓上式テーブル用 (輸出用)
(FOR EXPORT)
#04...FOR SEMI-SUNKEN TYPE TABLE 卓上式テーブル用
#05...FOR FULLY-SUNKEN TYPE TABLE 卓上式テーブル用

お問い合わせ、ご相談は
To order or for further
information,
please contact :

*このパーツリストは商品改良のため予告なく変更する場合があります。
* The description covered in this parts list is subject to change for improvement of the commodity without notice
* このパーツリストは、1993年10月現在の商品仕様で編集・印刷したものです。
* This parts list is edited and printed in accordance with the product specifications as of October 1993

Swing-type gathering device

FOR **JUKI**

S159 - S160

S161 - S162

INSTRUCTION MANUAL

Preface

Congratulations on your purchase of a JUKI gathering device. S159, S160, S161 and S162 models of gathering devices which are applicable to MO-3900E Series are the attachments for gathering.

Please read this Instruction Manual carefully before using it. We hope you will enjoy using it for a long time.

1. Name

Swing-type gathering device for the MO-3900E Series of overlock/safety stitch machine

S159: Swing-type gathering device for safety stitch machines (pedal-operated)

S161: Swing-type gathering device for safety stitch machines (lever-operated)

S160: Swing-type gathering device for overlock machines (pedal-operated)

S162: Swing-type gathering device for overlock machines (lever-operated)

2. Applicable models

MO-3904E-0E6	MO-3904E-0F6
MO-3914E-BD6	MO-3914E-BE6
MO-3912E-DF6	
MO-3916E-DD4	MO-3916E-DE4
MO-3916E-DF6	MO-3916E-FF6
MO-3916E-RH6	MO-3943E-FBD6

3. Specifications

Application	For continuous gathering and partial shirring on light-weight materials including knitted fabric, light-weight knits and broadcloth.
Sewing speed	Up to 7,000 s.p.m.
Differential feed ratio	Overlock machines 1:3 Safety stitch machines 1:3 (Adjust appropriately in accordance with the type of material to be used.)
Lift of the presser foot	Overlock machine: 6 mm Safety-stitch machine: 6 mm (5 mm only for RH6)

4. Parts to be replaced when the gathering device is used with the overlock/safety stitch machine

To operate an overlock/safety stitch machine in combination with the S159, S160, S161 or S162 gathering device, the gauge components need to be changed accordingly. Choose the appropriate parts from among those listed in the table below.

(1) Safety stitch machines (MO-3916E or 3943E) S159 or S161

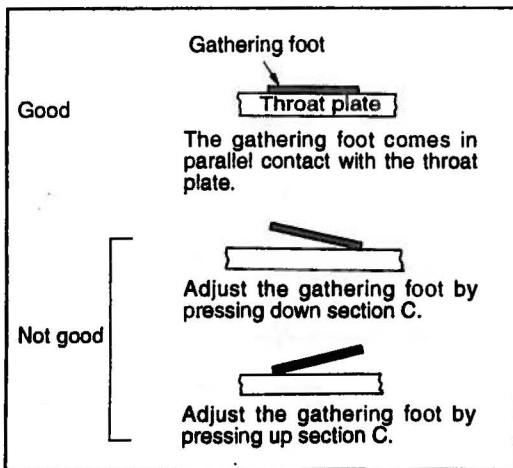
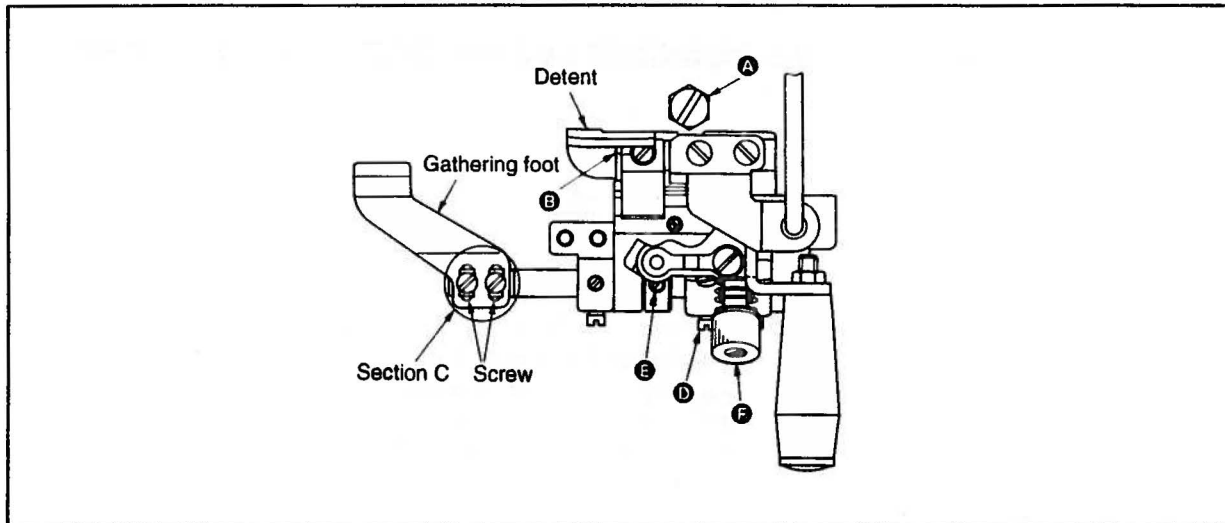
Gauge size	DD4	DE4	DF6	FF6	RH6	FBD6
Name						
Presser joint	12154654	12154654	12154753	12154852	12154951	11975950
Main feed dog	12170700	12170700	12170809	12170908	12170908	11884806
Differential feed dog	12172904	12172904	12173407	12173407	12173407	11885902
Throat plate	R4508J0DD0B	R4508J0ED0B	R4608J0FD0A	R4612J0FD0A	R461750HD0A	R4612J0DE02
* Gathering foot	-	-	-	-	* MAS0510800A	-

* Use the gathering foot only when the RH6 gauge set is used.

(2) Overlock machines (MO-3904E, -3912E or -3914E) S160 or S162

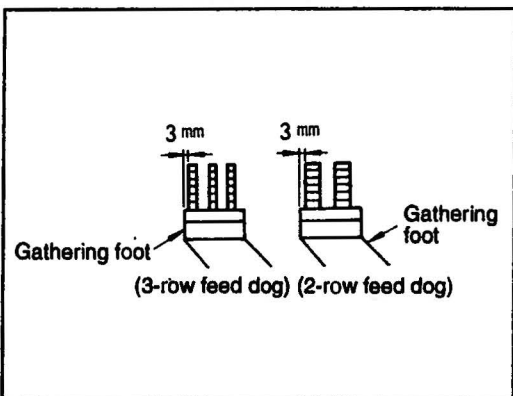
Gauge size	0E6	0F6	BD6	BE6	DF6(3912)
Name					
Presser joint	11878857	11974250	11879350	11879350	11974052
Main feed dog	11883402	11883402	11883402	11883402	11886603
Differential feed dog	12171807	12171807	12171807	12171807	12171906
Throat plate	R4300J0EE0B	R4300J0FE0A	R4305J0DE0A	R4305J0EE0A	R4308J0FE00

5. Adjusting the gathering foot



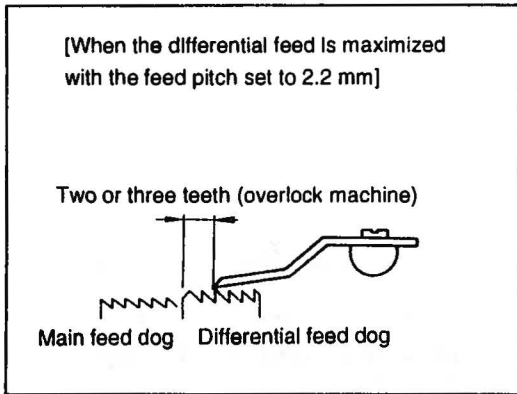
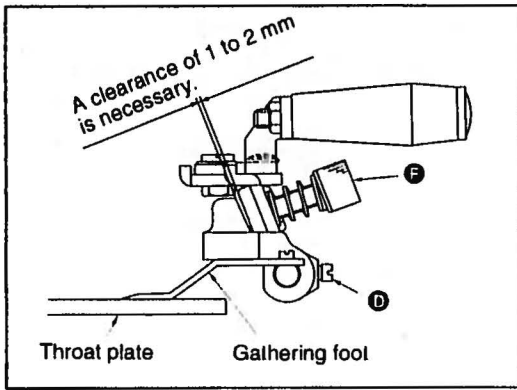
(1) Adjust the gathering foot so that it comes in parallel contact with the top surface of the throat plate over the length.

- a. Temporarily tighten screw **A**, loosen screw **B**, and adjust the parallelism between the gathering foot and the throat plate.
- b. After the completion of sewing, tighten screw **B** and screw **A**.



(2) Adjusting the vertical position and the lateral position of the gathering foot

- a. Loosen two screws **D** and screw **E** in the thrust collar, and adjust the position of the gathering foot, in the lateral direction, so that it is 3 mm spaced from the edge of the feed dog.



(3) Adjusting the longitudinal position of the gathering foot

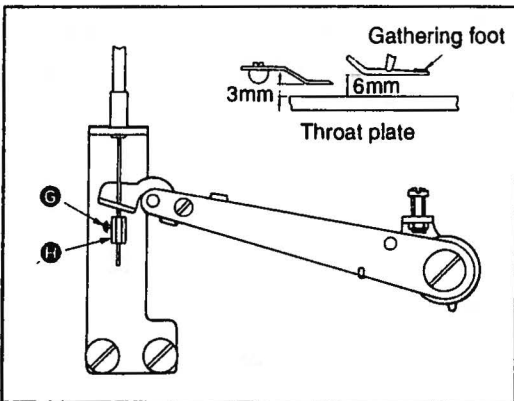
As the standard longitudinal position of the gathering foot, the gathering foot must reach the 2nd or 3rd tooth of the differential feed dog of the overlock machine or the 1st or 2nd tooth of the feed dog of the safety stitch machine when the differential feed dog completes feeding action.

The size of gathers is changed by moving the gathering foot back or forth. Adjust the longitudinal position of the gathering foot in accordance with the material to be used.

(4) Adjusting the pressure of the gathering foot

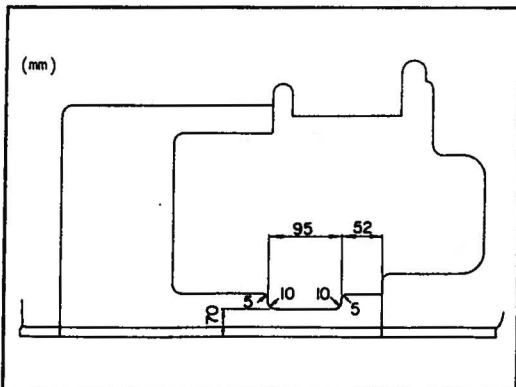
- a. Standard pressure of the gathering foot, as measured at the top end of the gathering foot, is 1.5 kg. However, adjust it properly in accordance with the material to be used. (Adjust the pressure using adjusting knob **F**.)

6. Adjusting the lifting amount of the gathering foot(S159, S160)



- a. Loosen screw **G**, and adjust the lifting amount of the gathering foot by moving **H** up or down. The standard lift of the gathering foot is 3 mm.

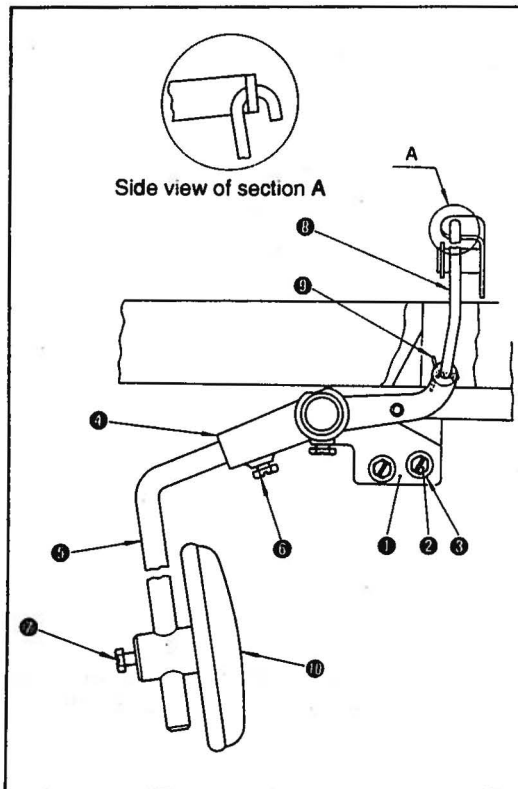
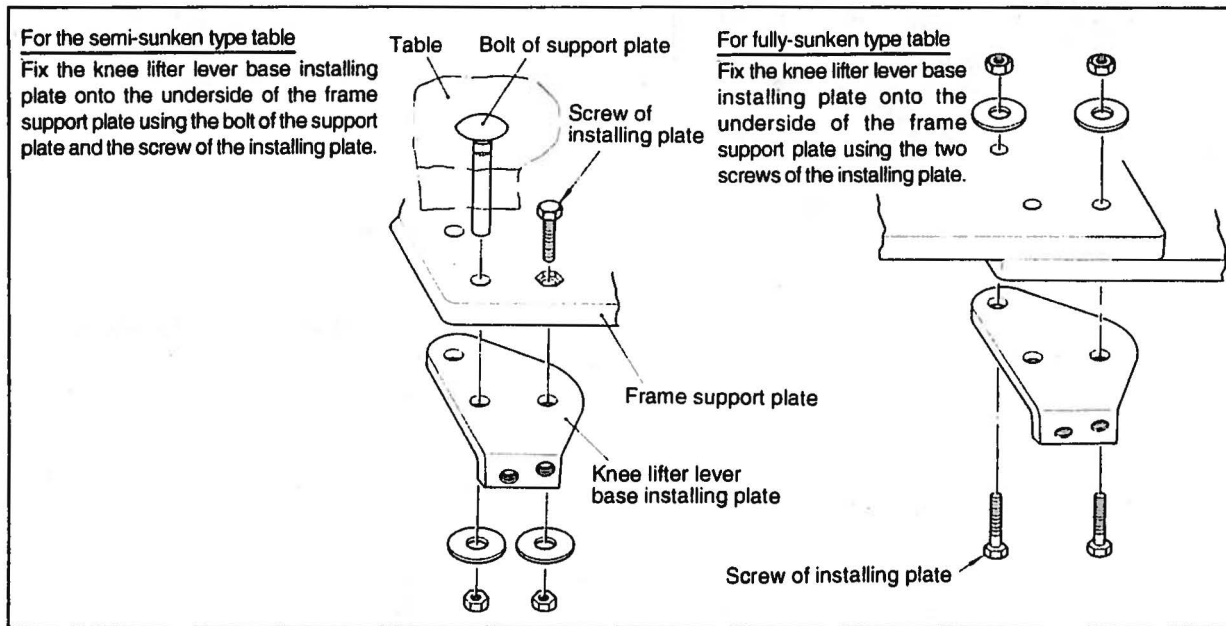
7. Modifying the table (fully-sunken type)



When using the S159 or S160 with a fully-sunken type table, modify the dimensions of the table as indicated in the figure on the left.

8. Installing the knee lifter

(1) Attach the knee lifter installing plate in place as illustrated below.



(2) Attach the knee lifter unit to the knee lifter lever base installing plate.

- 1) Attach knee lifter lever base ① to the frame support plate using screw ② and washer ③.
- 2) Put shaft ⑤ into knee lifter lever ④, and tighten screw ⑥.
- 3) Put knee lifter connecting rod ⑧ into the hole in the differential feed adjusting lever from this side, insert one end of the rod into the hole ④ in the lever and secure it with cotter pin ⑨ so that the rod will not come off.
- 4) Properly position knee pad ⑩ to allow the operator to operate the knee lifter with ease. Then fix the pad at that position using screw ⑦.

To order or for further information, please contact:

Please do not hesitate to contact our distributors or agents in your area for further information when necessary.

*The description covered in this instruction manual is subject to change for improvement of the commodity without notice.